

Glasgow City Health and Social Care Partnership


Executive Management Team



Pat Togher
 Chief Officer



Duncan Black
 Depute Chief Officer
 Finance &
 Resources and
 Chief Financial
 Officer



Stephen Fitzpatrick
 Depute Chief Officer
 Strategy, Innovation
 & Best Value



Kelda Gaffney
 Depute Chief Officer
 Operations &
 Governance and
 Chief Social Work
 Officer



Vacant
 Clinical Director




Dr Una Graham
 Deputy Medical
 Director
 Mental Health &
 Addiction Services



Dr Ruth Stocks
 Professional Lead
 Psychology



Lorraine Cribbin
 Interim Chief Nurse



Amanda Clarke
 Assistant Chief Officer
 Finance



Geraldine Collier
 Assistant Chief Officer
 Human Resources &
 Organisational
 Development



Lynsey Smith
 Assistant Chief Officer
 Operations and
 Governance



Karen Dyball
 Assistant Chief Officer
 Children's Services
 and North East
 Operations



Karen Lockhart
 Assistant Chief Officer
 Adult Services and
 North West
 Operations

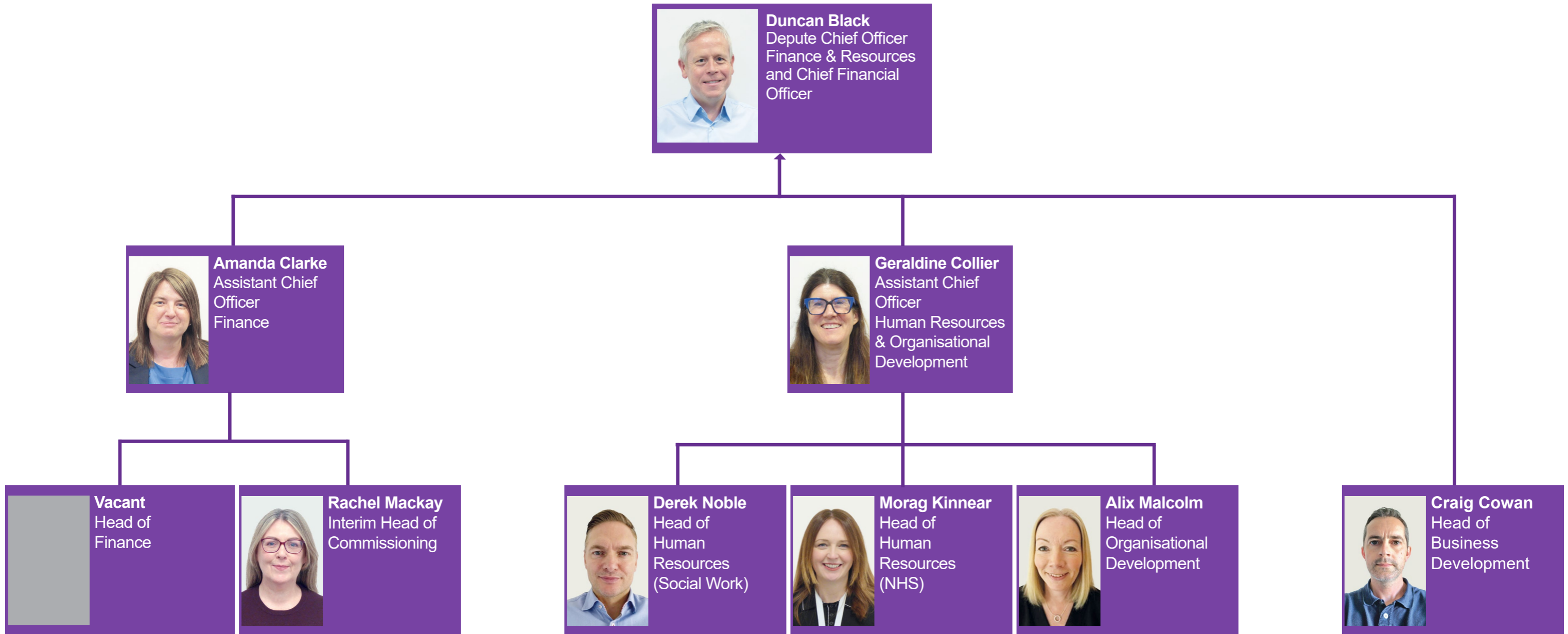


Caroline Sinclair
 Assistant Chief Officer
 Older People's
 Services &
 Primary Care and
 South Operations



Gordon Bryan
 Assistant Chief Officer
 Care Services

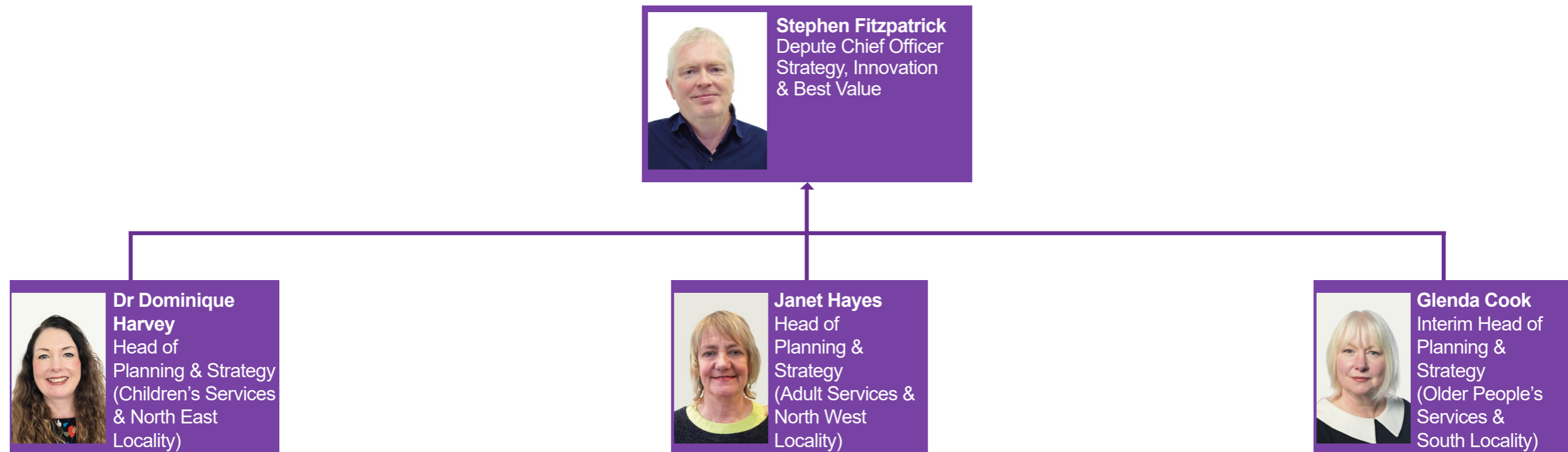
Glasgow City Health and Social Care Partnership
 Senior Management Team
 Finance & Resources



Glasgow City Health and Social Care Partnership

Senior Management Team

Strategy, Innovation & Best Value



Glasgow City Health and Social Care Partnership

Senior Management Team

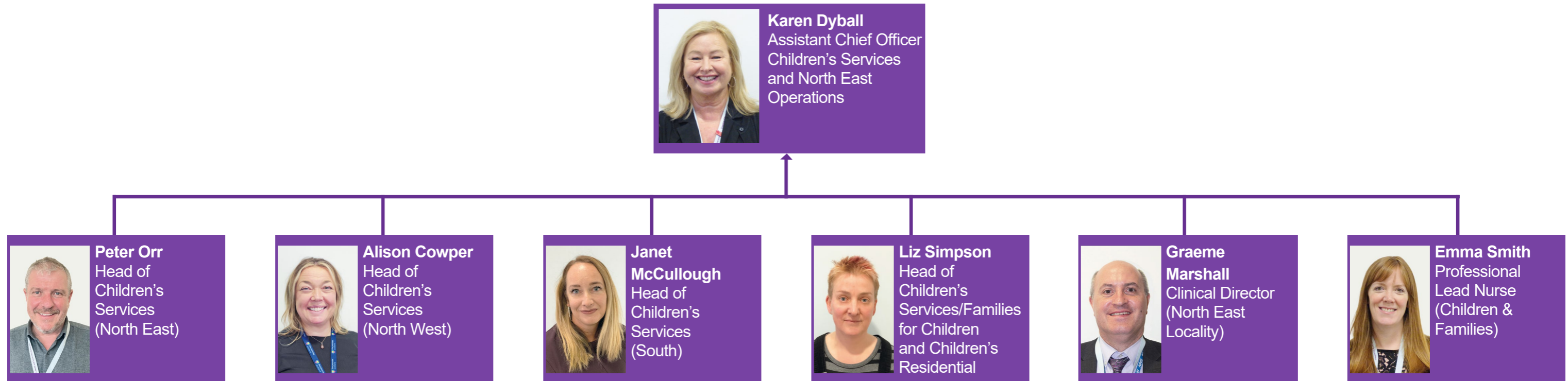
Operations & Governance



Glasgow City Health and Social Care Partnership

Senior Management Team

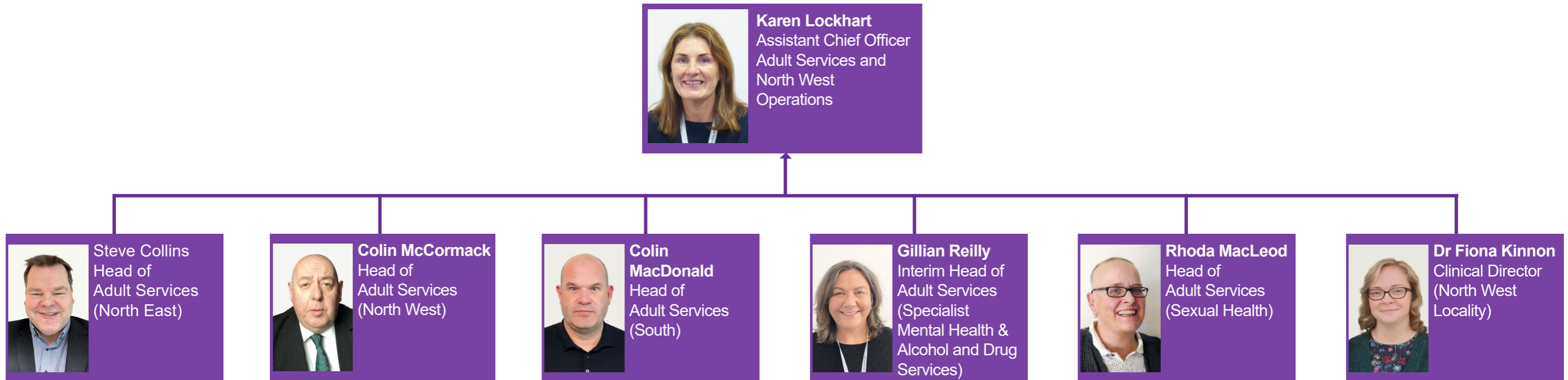
Children's Services



Glasgow City Health and Social Care Partnership

Senior Management Team

Adult Services



Glasgow City Health and Social Care Partnership
Senior Management Team
Older People's Services and Primary Care



Glasgow City Health and Social Care Partnership

Senior Management Team

Care Services

